

CHARACTERISTICS PORCELAIN (Group B)a				DATE: 07/11/2017
MODEL: WOODSTOCK BLANCO	SERIE: WOODSTOCK	CODE: 20000000000011437		
1.-CLASIFICACION (UNE-EN 14411)				
Dix Pressed Ceramic Tiles with low water absorption - Group Bb, E ≤ 0.5% for internal and external floors and walls.				
2.-SPECIFICACIONES (UNE-EN 14411 - ISO13.006)				
REQUIREMENTS	STANDARD APPLIED	REQUIREMENTS STANDARD	TEST RESULTS	
Dimensions and Surface Quality	ISO 10545-2		PASS	
Water Absorption	ISO 10545-3	E ≤ 0.5 %	PASS	
Modulus of Rupture	ISO 10545-4	≥ 35 N/mm ²	PASS	
MOHS	EN 101	(*)	8	
Crazing Resistance	ISO 10545-11	(*)	PASS	
Resistance to chemicals				
- Household chemicals/ammonium chloride solution 100 g/l		Min B	GA	
- Swimming pool salts/Sodium Hypochlorite solution 20 mg/l		Min B	GA	
- Acids and alkalis		(*)	GLA	
Low concentration/hydrochloric acid solution (3%)	ISO 10545-13	(*)	GLA	
Citric acid solution 100 g/l		(*)	GLA	
Potassium hydroxide 30 g/l		(*)	GLA	
High concentration/hydrochloric acid solution (18%)		(*)	GHA	
Lactic acid solution (5%)		(*)	GHA	
Potassium hydroxide 100 g/l		(*)	GHA	
Resistance to staining				
CR03FE203 + light oil	ISO 10545-14	Min 3	5	
Abrasion Resistance (PEI)	ISO 10545-7	(*)	IV	
Frost Resistance	ISO 10545-12	Required	PASS	
Slip resistance	DIN 51130 (R)	(*)	RS	
	ANSI 137.1 (DCOF)	(*)	>0.42	
	UNE-EN 12833/Clas	(*)	22P1	
3.-APLICACION GROUPS				
According to its characteristics, Hips de F. Gaya Fore, defines this model as group:				
GRUPO D				
(*) in manufacturer catalog				

1.-CLASIFICACION				
Water abs. production	Group I	Group IIa	Group IIb	Group III
A Extruded	E ≤ 3 % Group A1 ISO 13006 Annex A1	3 % < E ≤ 6 % Group A2a ISO 13006 Annex A2a	6 % < E ≤ 10 % Group A2b ISO 13006 Annex A2b	E > 10 % Group A3 ISO 13006 Annex A3
B Dry pressed	E ≤ 0.5 % Group B1a ISO 13006 Annex B1a	Group B1b ISO 13006 Annex B1b	Group B1c ISO 13006 Annex B1c	Group B1d ISO 13006 Annex B1d
C Others	Group C1	Group C1a	Group C1b	Group C1c

2.-CHARACTERISTICS		
RESISTANCE TO	CLASS	MEANING
Stains	1	The stain is removed with hot water and a damp cloth.
	2	The stain is removed with a weak cleaning agent.
	3	The stain is removed with mechanical cleaning and a strong cleaning agent.
	4	The stain is removed with stable solvent after immersion for 24 h.
	5	The stain is not removed.
Household chemicals	GA00	Non visible effect if the hue becomes slightly different, this is definite change in appearance.
Swimming pool salts	GB00	Definite change in appearance.
Acids and alkalis	GL00	Non visible effect if the hue becomes slightly different, this is definite change in appearance.
Low concentrations (L)	GL00	Partial or complete loss of the original surface.
High concentrations (H)	GH00	Non visible effect if the hue becomes slightly different, this is definite change in appearance.
	GH00	Definite change in appearance.
	GC00	Partial or complete loss of the original surface.

- GROUP A:** Recommended for moderate or low level transit. Suitable for bedrooms and/or bathrooms in houses (avoid any kind of abrasion).
- GROUP B:** Suitable for light or medium transit, such as rooms inside houses, except for kitchens or areas with direct access from outside.
- GROUP C:** Floorings recommended for medium transit, suitable for houses, all kind of rooms included kitchen or near to entrance area.
- GROUP D:** Flooring suitable for heavy traffic, such as entrances to houses with direct access from the outside, all kind of rooms and professional offices.
- GROUP GRAN TRANSITO:** Flooring suitable and recommended for very heavy traffic.

OBSERVACIONES:	

CHARACTERISTICS PORCELAIN (Group B)a				DATE: 07/11/2017
MODEL: WOODSTOCK GRE	SERIE: WOODSTOCK	CODE: 20000000000011438		
1.-CLASIFICACION (UNE-EN 14411)				
Dix Pressed Ceramic Tiles with low water absorption - Group Bb, E ≤ 0.5% for internal and external floors and walls.				
2.-SPECIFICACIONES (UNE-EN 14411 - ISO13.006)				
REQUIREMENTS	STANDARD APPLIED	REQUIREMENTS STANDARD	TEST RESULTS	
Dimensions and Surface Quality	ISO 10545-2		PASS	
Water Absorption	ISO 10545-3	E ≤ 0.5 %	PASS	
Modulus of Rupture	ISO 10545-4	≥ 35 N/mm ²	PASS	
MOHS	EN 101	(*)	8	
Crazing Resistance	ISO 10545-11	(*)	PASS	
Resistance to chemicals				
- Household chemicals/ammonium chloride solution 100 g/l		Min B	GA	
- Swimming pool salts/Sodium Hypochlorite solution 20 mg/l		Min B	GA	
- Acids and alkalis		(*)	GLA	
Low concentration/hydrochloric acid solution (3%)	ISO 10545-13	(*)	GLA	
Citric acid solution 100 g/l		(*)	GLA	
Potassium hydroxide 30 g/l		(*)	GLA	
High concentration/hydrochloric acid solution (18%)		(*)	GHA	
Lactic acid solution (5%)		(*)	GHA	
Potassium hydroxide 100 g/l		(*)	GHA	
Resistance to staining				
CR03FE203 + light oil	ISO 10545-14	Min 3	5	
Abrasion Resistance (PEI)	ISO 10545-7	(*)	III	
Frost Resistance	ISO 10545-12	Required	PASS	
Slip resistance	DIN 51130 (R)	(*)	RP	
	ANSI 137.1 (DCOF)	(*)	>0.42	
	UNE-EN 12833/Clas	(*)	22P1	
3.-APLICACION GROUPS				
According to its characteristics, Hips de F. Gaya Fore, defines this model as group:				
GRUPO C				
(*) in manufacturer catalog				

1.-CLASIFICACION				
Water abs. production	Group I	Group IIa	Group IIb	Group III
A Extruded	E ≤ 3 % Group A1 ISO 13006 Annex A1	3 % < E ≤ 6 % Group A2a ISO 13006 Annex A2a	6 % < E ≤ 10 % Group A2b ISO 13006 Annex A2b	E > 10 % Group A3 ISO 13006 Annex A3
B Dry pressed	E ≤ 0.5 % Group B1a ISO 13006 Annex B1a	Group B1b ISO 13006 Annex B1b	Group B1c ISO 13006 Annex B1c	Group B1d ISO 13006 Annex B1d
C Others	Group C1	Group C1a	Group C1b	Group C1c

2.-CHARACTERISTICS		
RESISTANCE TO	CLASS	MEANING
Stains	1	The stain is removed with hot water and a damp cloth.
	2	The stain is removed with a weak cleaning agent.
	3	The stain is removed with mechanical cleaning and a strong cleaning agent.
	4	The stain is removed with stable solvent after immersion for 24 h.
	5	The stain is not removed.
Household chemicals	GA00	Non visible effect if the hue becomes slightly different, this is definite change in appearance.
Swimming pool salts	GB00	Definite change in appearance.
Acids and alkalis	GL00	Non visible effect if the hue becomes slightly different, this is definite change in appearance.
Low concentrations (L)	GL00	Partial or complete loss of the original surface.
High concentrations (H)	GH00	Non visible effect if the hue becomes slightly different, this is definite change in appearance.
	GH00	Definite change in appearance.
	GC00	Partial or complete loss of the original surface.

- GROUP A:** Recommended for moderate or low level transit. Suitable for bedrooms and/or bathrooms in houses (avoid any kind of abrasion).
- GROUP B:** Suitable for light or medium transit, such as rooms inside houses, except for kitchens or areas with direct access from outside.
- GROUP C:** Floorings recommended for medium transit, suitable for houses, all kind of rooms included kitchen or near to entrance area.
- GROUP D:** Flooring suitable for heavy traffic, such as entrances to houses with direct access from the outside, all kind of rooms and professional offices.
- GROUP GRAN TRANSITO:** Flooring suitable and recommended for very heavy traffic.

OBSERVACIONES:	

CHARACTERISTICS PORCELAIN (Group B)a				DATE: 07/11/2017
MODEL: WOODSTOCK BLANCO DECO	SERIE: WOODSTOCK	CODE: 20000000000011587		
1.-CLASIFICACION (UNE-EN 14411)				
Dix Pressed Ceramic Tiles with low water absorption - Group Bb, E ≤ 0.5% for internal and external floors and walls.				
2.-SPECIFICACIONES (UNE-EN 14411 - ISO13.006)				
REQUIREMENTS	STANDARD APPLIED	REQUIREMENTS STANDARD	TEST RESULTS	
Dimensions and Surface Quality	ISO 10545-2		PASS	
Water Absorption	ISO 10545-3	E ≤ 0.5 %	PASS	
Modulus of Rupture	ISO 10545-4	≥ 35 N/mm ²	PASS	
MOHS	EN 101	(*)	8	
Crazing Resistance	ISO 10545-11	(*)	PASS	
Resistance to chemicals				
- Household chemicals/ammonium chloride solution 100 g/l		Min B	GA	
- Swimming pool salts/Sodium Hypochlorite solution 20 mg/l		Min B	GA	
- Acids and alkalis		(*)	GLA	
Low concentration/hydrochloric acid solution (3%)	ISO 10545-13	(*)	GLA	
Citric acid solution 100 g/l		(*)	GLA	
Potassium hydroxide 30 g/l		(*)	GLA	
High concentration/hydrochloric acid solution (18%)		(*)	GHA	
Lactic acid solution (5%)		(*)	GHA	
Potassium hydroxide 100 g/l		(*)	GHA	
Resistance to staining				
CR03FE203 + light oil	ISO 10545-14	Min 3	5	
Abrasion Resistance (PEI)	ISO 10545-7	(*)	IV	
Frost Resistance	ISO 10545-12	Required	PASS	
Slip resistance	DIN 51130 (R)	(*)	RS	
	ANSI 137.1 (DCOF)	(*)	>0.42	
	UNE-EN 12833/Clas	(*)	22P1	
3.-APLICACION GROUPS				
According to its characteristics, Hips de F. Gaya Fore, defines this model as group:				
GRUPO D				
(*) in manufacturer catalog				

1.-CLASIFICACION				
Water abs. production	Group I	Group IIa	Group IIb	Group III
A Extruded	E ≤ 3 % Group A1 ISO 13006 Annex A1	3 % < E ≤ 6 % Group A2a ISO 13006 Annex A2a	6 % < E ≤ 10 % Group A2b ISO 13006 Annex A2b	E > 10 % Group A3 ISO 13006 Annex A3
B Dry pressed	E ≤ 0.5 % Group B1a ISO 13006 Annex B1a	Group B1b ISO 13006 Annex B1b	Group B1c ISO 13006 Annex B1c	Group B1d ISO 13006 Annex B1d
C Others	Group C1	Group C1a	Group C1b	Group C1c

2.-CHARACTERISTICS		
RESISTANCE TO	CLASS	MEANING
Stains	1	The stain is removed with hot water and a damp cloth.
	2	The stain is removed with a weak cleaning agent.
	3	The stain is removed with mechanical cleaning and a strong cleaning agent.
	4	The stain is removed with stable solvent after immersion for 24 h.
	5	The stain is not removed.
Household chemicals	GA00	Non visible effect if the hue becomes slightly different, this is definite change in appearance.
Swimming pool salts	GB00	Definite change in appearance.
Acids and alkalis	GL00	Non visible effect if the hue becomes slightly different, this is definite change in appearance.
Low concentrations (L)	GL00	Partial or complete loss of the original surface.
High concentrations (H)	GH00	Non visible effect if the hue becomes slightly different, this is definite change in appearance.
	GH00	Definite change in appearance.
	GC00	Partial or complete loss of the original surface.

- GROUP A:** Recommended for moderate or low level transit. Suitable for bedrooms and/or bathrooms in houses (avoid any kind of abrasion).
- GROUP B:** Suitable for light or medium transit, such as rooms inside houses, except for kitchens or areas with direct access from outside.
- GROUP C:** Floorings recommended for medium transit, suitable for houses, all kind of rooms included kitchen or near to entrance area.
- GROUP D:** Flooring suitable for heavy traffic, such as entrances to houses with direct access from the outside, all kind of rooms and professional offices.
- GROUP GRAN TRANSITO:** Flooring suitable and recommended for very heavy traffic.

OBSERVACIONES:	

CHARACTERISTICS PORCELAIN (Group B)a				DATE: 07/11/2017
MODEL: WOODSTOCK GRE DECO	SERIE: WOODSTOCK	CODE: 20000000000011588		
1.-CLASIFICACION (UNE-EN 14411)				
Dix Pressed Ceramic Tiles with low water absorption - Group Bb, E ≤ 0.5% for internal and external floors and walls.				
2.-SPECIFICACIONES (UNE-EN 14411 - ISO13.006)				
REQUIREMENTS	STANDARD APPLIED	REQUIREMENTS STANDARD	TEST RESULTS	
Dimensions and Surface Quality	ISO 10545-2		PASS	
Water Absorption	ISO 10545-3	E ≤ 0.5 %	PASS	
Modulus of Rupture	ISO 10545-4	≥ 35 N/mm ²	PASS	
MOHS	EN 101	(*)	8	
Crazing Resistance	ISO 10545-11	(*)	PASS	
Resistance to chemicals				
- Household chemicals/ammonium chloride solution 100 g/l		Min B	GA	
- Swimming pool salts/Sodium Hypochlorite solution 20 mg/l		Min B	GA	
- Acids and alkalis		(*)	GLA	
Low concentration/hydrochloric acid solution (3%)	ISO 10545-13	(*)	GLA	
Citric acid solution 100 g/l		(*)	GLA	
Potassium hydroxide 30 g/l		(*)	GLA	
High concentration/hydrochloric acid solution (18%)		(*)	GHA	
Lactic acid solution (5%)		(*)	GHA	
Potassium hydroxide 100 g/l		(*)	GHA	
Resistance to staining				
CR03FE203 + light oil	ISO 10545-14	Min 3	5	
Abrasion Resistance (PEI)	ISO 10545-7	(*)	IV	
Frost Resistance	ISO 10545-12	Required	PASS	
Slip resistance	DIN 51130 (R)	(*)	RS	
	ANSI 137.1 (DCOF)	(*)	>0.42	
	UNE-EN 12833/Clas	(*)	22P1	
3.-APLICACION GROUPS				
According to its characteristics, Hips de F. Gaya Fore, defines this model as group:				
GRUPO D				
(*) in manufacturer catalog				

1.-CLASIFICACION				
Water abs. production	Group I	Group IIa	Group IIb	Group III
A Extruded	E ≤ 3 % Group A1 ISO 13006 Annex A1	3 % < E ≤ 6 % Group A2a ISO 13006 Annex A2a	6 % < E ≤ 10 % Group A2b ISO 13006 Annex A2b	E > 10 % Group A3 ISO 13006 Annex A3
B Dry pressed	E ≤ 0.5 % Group B1a ISO 13006 Annex B1a	Group B1b ISO 13006 Annex B1b	Group B1c ISO 13006 Annex B1c	Group B1d ISO 13006 Annex B1d
C Others	Group C1	Group C1a	Group C1b	Group C1c

2.-CHARACTERISTICS		
RESISTANCE TO	CLASS	MEANING
Stains	1	The stain is removed with hot water and a damp cloth.
	2	The stain is removed with a weak cleaning agent.
	3	The stain is removed with mechanical cleaning and a strong cleaning agent.
	4	The stain is removed with stable solvent after immersion for 24 h.
	5	The stain is not removed.
Household chemicals	GA00	Non visible effect if the hue becomes slightly different, this is definite change in appearance.
Swimming pool salts	GB00	Definite change in appearance.
Acids and alkalis	GL00	Non visible effect if the hue becomes slightly different, this is definite change in appearance.
Low concentrations (L)	GL00	Partial or complete loss of the original surface.
High concentrations (H)	GH00	Non visible effect if the hue becomes slightly different, this is definite change in appearance.
	GH00	Definite change in appearance.
	GC00	Partial or complete loss of the original surface.

- GROUP A:** Recommended for moderate or low level transit. Suitable for bedrooms and/or bathrooms in houses (avoid any kind of abrasion).
- GROUP B:** Suitable for light or medium transit, such as rooms inside houses, except for kitchens or areas with direct access from outside.
- GROUP C:** Floorings recommended for medium transit, suitable for houses, all kind of rooms included kitchen or near to entrance area.
- GROUP D:** Flooring suitable for heavy traffic, such as entrances to houses with direct access from the outside, all kind of rooms and professional offices.
- GROUP GRAN TRANSITO:** Flooring suitable and recommended for very heavy traffic.

OBSERVACIONES:	

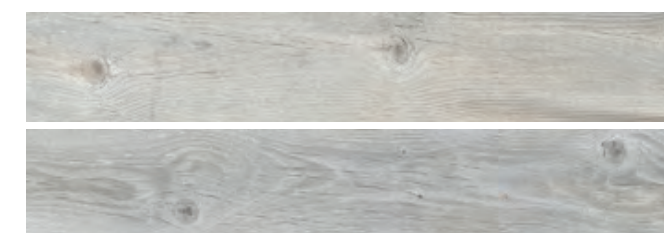


Designs for your lifestyle

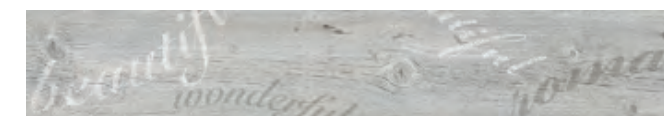
Exclusive Distributors:
 MIR Group, Inc.
 2200 B Zanker Rd, San Jose, CA 95131
 Ph: +1 408 432-5400,
 +1 408 432-1000
 fax: +1 408 228-3924
 e-mail: info@mir-mosaic.com
 www.facebook.com/mir.mosaic
 www.mir-mosaic.com

WOODSTOCK & ACADIA

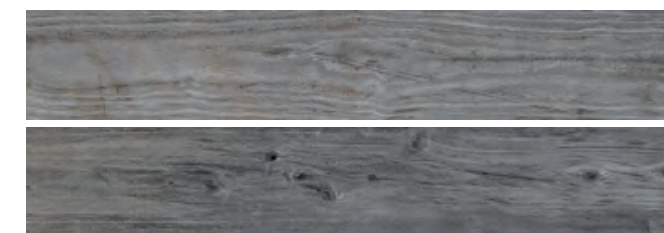
WOODSTOCK



WOODSTOCK BLANCO
Size: 5.9x35.4"



WOODSTOCK BLANCO DECO
Size: 5.9x35.4"



WOODSTOCK GRIS
Size: 5.9x35.4"



WOODSTOCK GRIS DECO
Size: 5.9x35.4"



WOODSTOCK MIEL
Size: 5.9x35.4"



WOODSTOCK MIEL DECO
Size: 5.9x35.4"



WOODSTOCK NATURAL
Size: 5.9x35.4"



WOODSTOCK NATURAL DECO
Size: 5.9x35.4"

CHARACTERISTICS PORCELAIN (Group B1a) DATE: 07/11/2017

MODEL: **ACADIA BLANCO** SERIE: **ACADIA**
 SIZE: 15x30 CODE: 20000000000013243

1.-CLASIFICACION (UNE-EN 14411).
 Dry Pressed Ceramics Tiles with low water absorption - Group B1a, E < 0.5% for internal and external floors and walls.

2.-SPECIFICACIONES (UNE-EN 14411 - ISO13.009)

REQUIREMENTS	STANDARD APPLIED	REQUIREMENTS STANDARD	TEST RESULTS
Dimensions and Surface Quality	ISO 10545-2	—	PASS
Water Absorption	ISO 10545-3	E < 0.5 %	PASS
Modulus of Rupture	ISO 10545-4	≥ 35 N/mm ²	PASS
MOHS	EN 101	(*)	6
Crazing Resistance	ISO 10545-11	(*)	PASS
Resistance to chemicals			
- Household chemicals: Ammonium chloride solution 100 g/l		Min B	GA
- Swimming pool salts: Sodium Hypochlorite solution 20 mg/l		Min B	GA
- Acids and alkalies:			
Low concentrations: Hydrochloric acid solution (3%)	ISO 10545-13	(*)	GLA
Citric acid solution 100 g/l		(*)	GLA
Potassium hydroxide 30 g/l		(*)	GLA
High concentrations: Hydrochloric acid solution (18%)		(*)	GHA
Lactic acid solution (5%)		(*)	GHA
Potassium hydroxide 100 g/l		(*)	GHA
Resistance to staining			
CO ₂ /3FE/2O ₃ + light oil	ISO 10545-14	Min 3	5
Abrasion Resistance (PEI)	ISO 10545-7	(*)	IV
Frost Resistance	ISO 10545-12	Required	PASS
Slip resistance	EN 13131 (R1)	(*)	R9
	ANSI 137.1 (DCCP)	(*)	>=42
	UNE-EN 12833(C1a)	(*)	27/1

3.-APPLICATION GROUPS
 According to its characteristics, Hijas de F. Gaya Fores, defines this model as group:

GRUPO D

(*) as manufacturer confirms

1.-CLASIFICACION

Water abs.	Group I	Group IIa	Group IIb	Group IIc	Group III
E ≤ 1 %	1 ≤ E ≤ 3 %	3 ≤ E ≤ 6 %	6 ≤ E ≤ 10 %	E > 10 %	E > 10 %
A Extruded	Group A1 ISO 13006 Annex A1	Group IIa ISO 13006 Annex A2a	Group IIb ISO 13006 Annex A2b	Group IIc ISO 13006 Annex A2c	Group III ISO 13006 Annex A3
B Dry pressed	Group B1a ISO 13006 Annex B1a E ≤ 0.5 % ISO 13006 Annex B1b 0.5 ≤ E ≤ 3 %	Group B1a ISO 13006 Annex B1a	Group B1b ISO 13006 Annex B1b	Group B1c ISO 13006 Annex B1c	Group B1d ISO 13006 Annex B1d
C Others	Group C1	Group C1a	Group C1b	Group C1c	Group C1d

2.-CHARACTERISTICS

RESISTANCE TO	CLASS	MEANING
Stains	5	The stain is removed with hot water and a damp cloth
	4	The stain is removed with a weak cleaning agent.
	3	The stain is removed with mechanical cleaning and a strong cleaning agent
	2	The stain is removed with stable solvent after immersion for 24 h.
Household chemicals Swimming pool salts	GA	Non Visible effect if the hue becomes slightly different, this is definite change in appearance
	GB	Partial or complete loss of the original surface
Acids and alkalies	GLA	Non Visible effect if the hue becomes slightly different, this is definite change in appearance
	GLB	Partial or complete loss of the original surface
	GLC	Partial or complete loss of the original surface
	GLD	Partial or complete loss of the original surface
High concentrations (H)	GHA	Non Visible effect if the hue becomes slightly different, this is definite change in appearance
	GBH	Definite change in appearance
	GBH	Definite change in appearance
	GBH	Partial or complete loss of the original surface

- 3.-APPLICATIONS GROUPS**
- GROUP A:** Recommended for moderate or low level transit. Suitable for bedrooms and/or bathrooms in houses (avoid any kind of abrasion).
- GROUP B:** Suitable for light or medium transit, such as rooms inside houses, except for kitchens or areas with direct access from outside.
- GROUP C:** Floorings recommended for medium transit, suitable for houses, all kind of rooms included kitchen or near to entrance area.
- GROUP D:** Flooring suitable for heavy traffic, such as entrances to houses with direct access from the outside, all kind of rooms and professional offices.
- GROUP GRAN TRANSITO:** Flooring suitable and recommended for very heavy traffic.

OBSERVACIONES:

CHARACTERISTICS PORCELAIN (Group B1a) DATE: 07/11/2017

MODEL: **ACADIA GRIS** SERIE: **ACADIA**
 SIZE: 15x30 CODE: 20000000000013244

1.-CLASIFICACION (UNE-EN 14411).
 Dry Pressed Ceramics Tiles with low water absorption - Group B1a, E < 0.5% for internal and external floors and walls.

2.-SPECIFICACIONES (UNE-EN 14411 - ISO13.009)

REQUIREMENTS	STANDARD APPLIED	REQUIREMENTS STANDARD	TEST RESULTS
Dimensions and Surface Quality	ISO 10545-2	—	PASS
Water Absorption	ISO 10545-3	E < 0.5 %	PASS
Modulus of Rupture	ISO 10545-4	≥ 35 N/mm ²	PASS
MOHS	EN 101	(*)	6
Crazing Resistance	ISO 10545-11	(*)	PASS
Resistance to chemicals			
- Household chemicals: Ammonium chloride solution 100 g/l		Min B	GA
- Swimming pool salts: Sodium Hypochlorite solution 20 mg/l		Min B	GA
- Acids and alkalies:			
Low concentrations: Hydrochloric acid solution (3%)	ISO 10545-13	(*)	GLA
Citric acid solution 100 g/l		(*)	GLA
Potassium hydroxide 30 g/l		(*)	GLA
High concentrations: Hydrochloric acid solution (18%)		(*)	GHA
Lactic acid solution (5%)		(*)	GHA
Potassium hydroxide 100 g/l		(*)	GHA
Resistance to staining			
CO ₂ /3FE/2O ₃ + light oil	ISO 10545-14	Min 3	5
Abrasion Resistance (PEI)	ISO 10545-7	(*)	IV
Frost Resistance	ISO 10545-12	Required	PASS
Slip resistance	EN 13131 (R1)	(*)	R9
	ANSI 137.1 (DCCP)	(*)	>=42
	UNE-EN 12833(C1a)	(*)	27/1

3.-APPLICATION GROUPS
 According to its characteristics, Hijas de F. Gaya Fores, defines this model as group:

GRUPO D

(*) as manufacturer confirms

1.-CLASIFICACION

Water abs.	Group I	Group IIa	Group IIb	Group IIc	Group III
E ≤ 1 %	1 ≤ E ≤ 3 %	3 ≤ E ≤ 6 %	6 ≤ E ≤ 10 %	E > 10 %	E > 10 %
A Extruded	Group A1 ISO 13006 Annex A1	Group IIa ISO 13006 Annex A2a	Group IIb ISO 13006 Annex A2b	Group IIc ISO 13006 Annex A2c	Group III ISO 13006 Annex A3
B Dry pressed	Group B1a ISO 13006 Annex B1a E ≤ 0.5 % ISO 13006 Annex B1b 0.5 ≤ E ≤ 3 %	Group B1a ISO 13006 Annex B1a	Group B1b ISO 13006 Annex B1b	Group B1c ISO 13006 Annex B1c	Group B1d ISO 13006 Annex B1d
C Others	Group C1	Group C1a	Group C1b	Group C1c	Group C1d

2.-CHARACTERISTICS

RESISTANCE TO	CLASS	MEANING
Stains	5	The stain is removed with hot water and a damp cloth
	4	The stain is removed with a weak cleaning agent.
	3	The stain is removed with mechanical cleaning and a strong cleaning agent
	2	The stain is removed with stable solvent after immersion for 24 h.
Household chemicals Swimming pool salts	GA	Non Visible effect if the hue becomes slightly different, this is definite change in appearance
	GB	Partial or complete loss of the original surface
Acids and alkalies	GLA	Non Visible effect if the hue becomes slightly different, this is definite change in appearance
	GLB	Partial or complete loss of the original surface
	GLC	Partial or complete loss of the original surface
	GLD	Partial or complete loss of the original surface
High concentrations (H)	GHA	Non Visible effect if the hue becomes slightly different, this is definite change in appearance
	GBH	Definite change in appearance
	GBH	Definite change in appearance
	GBH	Partial or complete loss of the original surface

- 3.-APPLICATIONS GROUPS**
- GROUP A:** Recommended for moderate or low level transit. Suitable for bedrooms and/or bathrooms in houses (avoid any kind of abrasion).
- GROUP B:** Suitable for light or medium transit, such as rooms inside houses, except for kitchens or areas with direct access from outside.
- GROUP C:** Floorings recommended for medium transit, suitable for houses, all kind of rooms included kitchen or near to entrance area.
- GROUP D:** Flooring suitable for heavy traffic, such as entrances to houses with direct access from the outside, all kind of rooms and professional offices.
- GROUP GRAN TRANSITO:** Flooring suitable and recommended for very heavy traffic.

OBSERVACIONES:

CHARACTERISTICS PORCELAIN (Group B1a) DATE: 07/11/2017

MODEL: **ACADIA SPIGA BLANCO** SERIE: **ACADIA**
 SIZE: 45x30 CODE: 20000000000013245

1.-CLASIFICACION (UNE-EN 14411).
 Dry Pressed Ceramics Tiles with low water absorption - Group B1a, E < 0.5% for internal and external floors and walls.

2.-SPECIFICACIONES (UNE-EN 14411 - ISO13.009)

REQUIREMENTS	STANDARD APPLIED	REQUIREMENTS STANDARD	TEST RESULTS
Dimensions and Surface Quality	ISO 10545-2	—	PASS
Water Absorption	ISO 10545-3	E < 0.5 %	PASS
Modulus of Rupture	ISO 10545-4	≥ 35 N/mm ²	PASS
MOHS	EN 101	(*)	6
Crazing Resistance	ISO 10545-11	(*)	PASS
Resistance to chemicals			
- Household chemicals: Ammonium chloride solution 100 g/l		Min B	GA
- Swimming pool salts: Sodium Hypochlorite solution 20 mg/l		Min B	GA
- Acids and alkalies:			
Low concentrations: Hydrochloric acid solution (3%)	ISO 10545-13	(*)	GLA
Citric acid solution 100 g/l		(*)	GLA
Potassium hydroxide 30 g/l		(*)	GLA
High concentrations: Hydrochloric acid solution (18%)		(*)	GHA
Lactic acid solution (5%)		(*)	GHA
Potassium hydroxide 100 g/l		(*)	GHA
Resistance to staining			
CO ₂ /3FE/2O ₃ + light oil	ISO 10545-14	Min 3	5
Abrasion Resistance (PEI)	ISO 10545-7	(*)	IV
Frost Resistance	ISO 10545-12	Required	PASS
Slip resistance	EN 13131 (R1)	(*)	R9
	ANSI 137.1 (DCCP)	(*)	>=42
	UNE-EN 12833(C1a)	(*)	27/1

3.-APPLICATION GROUPS
 According to its characteristics, Hijas de F. Gaya Fores, defines this model as group:

GRUPO D

(*) as manufacturer confirms

1.-CLASIFICACION

Water abs.	Group I	Group IIa	Group IIb	Group IIc	Group III
E ≤ 1 %	1 ≤ E ≤ 3 %	3 ≤ E ≤ 6 %	6 ≤ E ≤ 10 %	E > 10 %	E > 10 %
A Extruded	Group A1 ISO 13006 Annex A1	Group IIa ISO 13006 Annex A2a	Group IIb ISO 13006 Annex A2b	Group IIc ISO 13006 Annex A2c	Group III ISO 13006 Annex A3
B Dry pressed	Group B1a ISO 13006 Annex B1a E ≤ 0.5 % ISO 13006 Annex B1b 0.5 ≤ E ≤ 3 %	Group B1a ISO 13006 Annex B1a	Group B1b ISO 13006 Annex B1b	Group B1c ISO 13006 Annex B1c	Group B1d ISO 13006 Annex B1d
C Others	Group C1	Group C1a	Group C1b	Group C1c	Group C1d

2.-CHARACTERISTICS

RESISTANCE TO	CLASS	MEANING
Stains	5	The stain is removed with hot water and a damp cloth
	4	The stain is removed with a weak cleaning agent.
	3	The stain is removed with mechanical cleaning and a strong cleaning agent
	2	The stain is removed with stable solvent after immersion for 24 h.
Household chemicals Swimming pool salts	GA	Non Visible effect if the hue becomes slightly different, this is definite change in appearance
	GB	Partial or complete loss of the original surface
Acids and alkalies	GLA	Non Visible effect if the hue becomes slightly different, this is definite change in appearance
	GLB	Partial or complete loss of the original surface
	GLC	Partial or complete loss of the original surface
	GLD	Partial or complete loss of the original surface
High concentrations (H)	GHA	Non Visible effect if the hue becomes slightly different, this is definite change in appearance
	GBH	Definite change in appearance
	GBH	Definite change in appearance
	GBH	Partial or complete loss of the original surface

- 3.-APPLICATIONS GROUPS**
- GROUP A:** Recommended for moderate or low level transit. Suitable for bedrooms and/or bathrooms in houses (avoid any kind of abrasion).
- GROUP B:** Suitable for light or medium transit, such as rooms inside houses, except for kitchens or areas with direct access from outside.
- GROUP C:** Floorings recommended for medium transit, suitable for houses, all kind of rooms included kitchen or near to entrance area.
- GROUP D:** Flooring suitable for heavy traffic, such as entrances to houses with direct access from the outside, all kind of rooms and professional offices.
- GROUP GRAN TRANSITO:** Flooring suitable and recommended for very heavy traffic.

OBSERVACIONES:

CHARACTERISTICS PORCELAIN (Group B1a) DATE: 07/11/2017

MODEL: **ACADIA SPIGA GRIS** SERIE: **ACADIA**
 SIZE: 45x30 CODE: 20000000000013247

1.-CLASIFICACION (UNE-EN 14411).
 Dry Pressed Ceramics Tiles with low water absorption - Group B1a, E < 0.5% for internal and external floors and walls.

2.-SPECIFICACIONES (UNE-EN 14411 - ISO13.009)

REQUIREMENTS	STANDARD APPLIED	REQUIREMENTS STANDARD	TEST RESULTS
Dimensions and Surface Quality	ISO 10545-2	—	PASS
Water Absorption	ISO 10545-3	E < 0.5 %	PASS
Modulus of Rupture	ISO 10545-4	≥ 35 N/mm ²	PASS
MOHS	EN 101	(*)	6
Crazing Resistance	ISO 10545-11	(*)	PASS
Resistance to chemicals			
- Household chemicals: Ammonium chloride solution 100 g/l		Min B	GA
- Swimming pool salts: Sodium Hypochlorite solution 20 mg/l		Min B	GA
- Acids and alkalies:			
Low concentrations: Hydrochloric acid solution (3%)	ISO 10545-13	(*)	GLA
Citric acid solution 100 g/l		(*)	GLA
Potassium hydroxide 30 g/l		(*)	GLA
High concentrations: Hydrochloric acid solution (18%)		(*)	GHA
Lactic acid solution (5%)		(*)	GHA
Potassium hydroxide 100 g/l		(*)	GHA
Resistance to staining			
CO ₂ /3FE/2O ₃ + light oil	ISO 10545-14	Min 3	5
Abrasion Resistance (PEI)	ISO 10545-7	(*)	IV
Frost Resistance	ISO 10545-12	Required	PASS
Slip resistance	EN 13131 (R1)	(*)	R9
	ANSI 137.1 (DCCP)	(*)	>=42
	UNE-EN 12833(C1a)	(*)	27/1

3.-APPLICATION GROUPS
 According to its characteristics, Hijas de F. Gaya Fores, defines this model as group:

GRUPO D

(*) as manufacturer confirms

1.-CLASIFICACION

Water abs.	Group I	Group IIa	Group IIb	Group IIc	Group III
E ≤ 1 %	1 ≤ E ≤ 3 %	3 ≤ E ≤ 6 %	6 ≤ E ≤ 10 %	E > 10 %	E > 10 %
A Extruded	Group A1 ISO 13006 Annex A1	Group IIa ISO 13006 Annex A2a	Group IIb ISO 13006 Annex A2b	Group IIc ISO 13006 Annex A2c	Group III ISO 13006 Annex A3
B Dry pressed	Group B1a ISO 13006 Annex B1a E ≤ 0.5 % ISO 13006 Annex B1b 0.5 ≤ E ≤ 3 %	Group B1a ISO 13006 Annex B1a	Group B1b ISO 13006 Annex B1b	Group B1c ISO 13006 Annex B1c	Group B1d ISO 13006 Annex B1d
C Others	Group C1	Group C1a	Group C1b	Group C1c	Group C1d

2.-CHARACTERISTICS

RESISTANCE TO	CLASS	MEANING
Stains	5	The stain is removed with hot water and a damp cloth
	4	The stain is removed with a weak cleaning agent.
	3	The stain is removed with mechanical cleaning and a strong cleaning agent
	2	The stain is removed with stable solvent after immersion for 24 h.
Household chemicals Swimming pool salts	GA	Non Visible effect if the hue becomes slightly different, this is definite change in appearance
	GB	Partial or complete loss of the original surface
Acids and alkalies	GLA	Non Visible effect if the hue becomes slightly different, this is definite change in appearance
	GLB	Partial or complete loss of the original surface
	GLC	Partial or complete loss of the original surface
	GLD	Partial or complete loss of the original surface
High concentrations (H)	GHA	Non Visible effect if the hue becomes slightly different, this is definite change in appearance
	GBH	Definite change in appearance
	GBH	Definite change in appearance
	GBH	Partial or complete loss of the original surface

- 3.-APPLICATIONS GROUPS**
- GROUP A:** Recommended for moderate or low level transit. Suitable for bedrooms and/or bathrooms in houses (avoid any kind of abrasion).
- GROUP B:** Suitable for light or medium transit, such as rooms inside houses, except for kitchens or areas with direct access from outside.
- GROUP C:** Floorings recommended for medium transit, suitable for houses, all kind of rooms included kitchen or near to entrance area.
- GROUP D:** Flooring suitable for heavy traffic, such as entrances to houses with direct access from the outside, all kind of rooms and professional offices.
- GROUP GRAN TRANSITO:** Flooring suitable and recommended for very heavy traffic.

OBSERVACIONES:



ACADIA



ACADIA BLANCO
 Size: 5.9x35.4"



ACADIA SPIGA BLANCO
 Size: 17.7x35.4"



ACADIA GRIS
 Size: 5.9x35.4"



ACADIA SPIGA GRIS
 Size: 17.7x35.4"

CHARACTERISTICS PORCELAIN (Group B)a				DATE: 07/11/2017
MODEL: WOODSTOCK MEL	SERIE: WOODSTOCK	CODE: 20000000000011439		
1.-CLASIFICACION (UNE-EN 14411)				
Dry Pressed Ceramic Tiles with low water absorption - Group Bb, E ≤ 0.5% for internal and external floors and walls.				
2.-SPECIFICACIONES (UNE-EN 14411 - ISO13.006)				
REQUIREMENTS	STANDARD APPLIED	REQUIREMENTS STANDARD	TEST RESULTS	
Dimensions and Surface Quality	ISO 10545-2	—	PASS	
Water Absorption	ISO 10545-3	E ≤ 0.5 %	PASS	
Modulus of Rupture	ISO 10545-4	≥ 35 N/mm ²	PASS	
Slip	EN 101	(*)	PASS	
Cracking Resistance	ISO 10545-11	(*)	PASS	
Resistance to chemicals				
- Household chemicals/ammonium chloride solution 100 g/l		Min B	GA	
- Swimming pool salts/Sodium Hypochlorite solution 20 mg/l		Min B	GA	
- Acids and alkalis:				
- Low concentration/hydrochloric acid solution (3%)	ISO 10545-13	(*)	GLA	
- Citric acid solution 100 g/l		(*)	GLA	
- Potassium hydroxide 30 g/l		(*)	GLA	
- High concentration/hydrochloric acid solution (18%)		(*)	GHA	
- Lactic acid solution (5%)		(*)	GHA	
- Potassium hydroxide 100 g/l		(*)	GHA	
Resistance to staining				
- C203/FE203 + light oil	ISO 10545-14	Min 3	5	
Abrasion Resistance (PEI)	ISO 10545-7	(*)	II	
Frost Resistance	ISO 10545-12	Required	PASS	
Slip resistance	DIN 51130 (R 1)	(*)	RB	
	ANSI 137.1 (DCCOF)	(*)	≥0.42	
	UNE-ENV 12633/Clae	(*)	ZP/1	
3.-APLICACION GROUPS				
According to its characteristics, Hips de F. Gaya Fores, defines this model as group:				
GRUPO C				

(*) in manufacturer catalog

1.-CLASIFICACION				
Water absorption production	Group I	Group IIa	Group IIb	Group III
	E ≤ 3 %	3 % < E ≤ 6 %	6 % < E ≤ 10 %	E > 10 %
A Extruded	Group A1 ISO 13006 Annex A1	Group A2a ISO 13006 Annex A2a	Group A2b ISO 13006 Annex A2b	Group A3 ISO 13006 Annex A3
B Dry pressed	Group B1a E ≤ 0.5 % ISO 13006 Annex B1a	Group B1b ISO 13006 Annex B1b	Group B1c ISO 13006 Annex B1c	Group B1d ISO 13006 Annex B1d
C Others	Group C1	Group C1a	Group C1b	Group C1c

2.-CHARACTERISTICS		
RESISTANCE TO	CLASS	MEANING
Stains	1	The stain is removed with hot water and a damp cloth.
	2	The stain is removed with a weak cleaning agent.
	3	The stain is removed with mechanical cleaning and a strong cleaning agent.
	4	The stain is removed with stable solvent after immersion for 24 h.
Household chemicals Swimming pool salts	GA/VA	Non visible effect if the hue becomes slightly different, this is definite change in appearance.
	GB/VA	Partial or complete loss of the original surface.
	GC/VA	Partial or complete loss of the original surface.
Acids and alkalis	GLA/VA	Non visible effect if the hue becomes slightly different, this is definite change in appearance.
	GLB/VA	Partial or complete loss of the original surface.
	GLC/VA	Partial or complete loss of the original surface.
	GHA/VA	Non visible effect if the hue becomes slightly different, this is definite change in appearance.
	GBH/VA	Partial or complete loss of the original surface.
	GBV/VA	Partial or complete loss of the original surface.

- GROUP A.** Recommended for moderate or low level transit. Suitable for bedrooms and/or bathrooms in houses (avoid any kind of abrasion).
- GROUP B.** Suitable for light or medium transit, such as rooms inside houses, except for kitchens or areas with direct access from outside.
- GROUP C.** Floorings recommended for medium transit, suitable for houses, all kind of rooms included kitchen or near to entrance area.
- GROUP D.** Floorings suitable for heavy traffic, such as entrances to houses with direct access from the outside, all kind of rooms and professional offices.
- GROUP GRAN TRANSITO.** Floorings suitable and recommended for very heavy traffic.

OBSERVACIONES:

CHARACTERISTICS PORCELAIN (Group B)a				DATE: 07/11/2017
MODEL: WOODSTOCK NATURAL	SERIE: WOODSTOCK	CODE: 20000000000011440		
1.-CLASIFICACION (UNE-EN 14411)				
Dry Pressed Ceramic Tiles with low water absorption - Group Bb, E ≤ 0.5% for internal and external floors and walls.				
2.-SPECIFICACIONES (UNE-EN 14411 - ISO13.006)				
REQUIREMENTS	STANDARD APPLIED	REQUIREMENTS STANDARD	TEST RESULTS	
Dimensions and Surface Quality	ISO 10545-2	—	PASS	
Water Absorption	ISO 10545-3	E ≤ 0.5 %	PASS	
Modulus of Rupture	ISO 10545-4	≥ 35 N/mm ²	PASS	
Slip	EN 101	(*)	PASS	
Cracking Resistance	ISO 10545-11	(*)	PASS	
Resistance to chemicals				
- Household chemicals/ammonium chloride solution 100 g/l		Min B	GA	
- Swimming pool salts/Sodium Hypochlorite solution 20 mg/l		Min B	GA	
- Acids and alkalis:				
- Low concentration/hydrochloric acid solution (3%)	ISO 10545-13	(*)	GLA	
- Citric acid solution 100 g/l		(*)	GLA	
- Potassium hydroxide 30 g/l		(*)	GLA	
- High concentration/hydrochloric acid solution (18%)		(*)	GHA	
- Lactic acid solution (5%)		(*)	GHA	
- Potassium hydroxide 100 g/l		(*)	GHA	
Resistance to staining				
- C203/FE203 + light oil	ISO 10545-14	Min 3	5	
Abrasion Resistance (PEI)	ISO 10545-7	(*)	II	
Frost Resistance	ISO 10545-12	Required	PASS	
Slip resistance	DIN 51130 (R 1)	(*)	RB	
	ANSI 137.1 (DCCOF)	(*)	≥0.42	
	UNE-ENV 12633/Clae	(*)	ZP/1	
3.-APLICACION GROUPS				
According to its characteristics, Hips de F. Gaya Fores, defines this model as group:				
GRUPO B				

(*) in manufacturer catalog

1.-CLASIFICACION				
Water absorption production	Group I	Group IIa	Group IIb	Group III
	E ≤ 3 %	3 % < E ≤ 6 %	6 % < E ≤ 10 %	E > 10 %
A Extruded	Group A1 ISO 13006 Annex A1	Group A2a ISO 13006 Annex A2a	Group A2b ISO 13006 Annex A2b	Group A3 ISO 13006 Annex A3
B Dry pressed	Group B1a E ≤ 0.5 % ISO 13006 Annex B1a	Group B1b ISO 13006 Annex B1b	Group B1c ISO 13006 Annex B1c	Group B1d ISO 13006 Annex B1d
C Others	Group C1	Group C1a	Group C1b	Group C1c

2.-CHARACTERISTICS		
RESISTANCE TO	CLASS	MEANING
Stains	1	The stain is removed with hot water and a damp cloth.
	2	The stain is removed with a weak cleaning agent.
	3	The stain is removed with mechanical cleaning and a strong cleaning agent.
	4	The stain is removed with stable solvent after immersion for 24 h.
Household chemicals Swimming pool salts	GA/VA	Non visible effect if the hue becomes slightly different, this is definite change in appearance.
	GB/VA	Partial or complete loss of the original surface.
	GC/VA	Partial or complete loss of the original surface.
Acids and alkalis	GLA/VA	Non visible effect if the hue becomes slightly different, this is definite change in appearance.
	GLB/VA	Partial or complete loss of the original surface.
	GLC/VA	Partial or complete loss of the original surface.
	GHA/VA	Non visible effect if the hue becomes slightly different, this is definite change in appearance.
	GBH/VA	Partial or complete loss of the original surface.
	GBV/VA	Partial or complete loss of the original surface.

- GROUP A.** Recommended for moderate or low level transit. Suitable for bedrooms and/or bathrooms in houses (avoid any kind of abrasion).
- GROUP B.** Suitable for light or medium transit, such as rooms inside houses, except for kitchens or areas with direct access from outside.
- GROUP C.** Floorings recommended for medium transit, suitable for houses, all kind of rooms included kitchen or near to entrance area.
- GROUP D.** Floorings suitable for heavy traffic, such as entrances to houses with direct access from the outside, all kind of rooms and professional offices.
- GROUP GRAN TRANSITO.** Floorings suitable and recommended for very heavy traffic.

OBSERVACIONES:

CHARACTERISTICS PORCELAIN (Group B)a				DATE: 07/11/2017
MODEL: WOODSTOCK MEL DECO	SERIE: WOODSTOCK	CODE: 20000000000011589		
1.-CLASIFICACION (UNE-EN 14411)				
Dry Pressed Ceramic Tiles with low water absorption - Group Bb, E ≤ 0.5% for internal and external floors and walls.				
2.-SPECIFICACIONES (UNE-EN 14411 - ISO13.006)				
REQUIREMENTS	STANDARD APPLIED	REQUIREMENTS STANDARD	TEST RESULTS	
Dimensions and Surface Quality	ISO 10545-2	—	PASS	
Water Absorption	ISO 10545-3	E ≤ 0.5 %	PASS	
Modulus of Rupture	ISO 10545-4	≥ 35 N/mm ²	PASS	
Slip	EN 101	(*)	PASS	
Cracking Resistance	ISO 10545-11	(*)	PASS	
Resistance to chemicals				
- Household chemicals/ammonium chloride solution 100 g/l		Min B	GA	
- Swimming pool salts/Sodium Hypochlorite solution 20 mg/l		Min B	GA	
- Acids and alkalis:				
- Low concentration/hydrochloric acid solution (3%)	ISO 10545-13	(*)	GLA	
- Citric acid solution 100 g/l		(*)	GLA	
- Potassium hydroxide 30 g/l		(*)	GLA	
- High concentration/hydrochloric acid solution (18%)		(*)	GHA	
- Lactic acid solution (5%)		(*)	GHA	
- Potassium hydroxide 100 g/l		(*)	GHA	
Resistance to staining				
- C203/FE203 + light oil	ISO 10545-14	Min 3	5	
Abrasion Resistance (PEI)	ISO 10545-7	(*)	II	
Frost Resistance	ISO 10545-12	Required	PASS	
Slip resistance	DIN 51130 (R 1)	(*)	RB	
	ANSI 137.1 (DCCOF)	(*)	≥0.42	
	UNE-ENV 12633/Clae	(*)	ZP/1	
3.-APLICACION GROUPS				
According to its characteristics, Hips de F. Gaya Fores, defines this model as group:				
GRUPO B				

(*) in manufacturer catalog

1.-CLASIFICACION				
Water absorption production	Group I	Group IIa	Group IIb	Group III
	E ≤ 3 %	3 % < E ≤ 6 %	6 % < E ≤ 10 %	E > 10 %
A Extruded	Group A1 ISO 13006 Annex A1	Group A2a ISO 13006 Annex A2a	Group A2b ISO 13006 Annex A2b	Group A3 ISO 13006 Annex A3
B Dry pressed	Group B1a E ≤ 0.5 % ISO 13006 Annex B1a	Group B1b ISO 13006 Annex B1b	Group B1c ISO 13006 Annex B1c	Group B1d ISO 13006 Annex B1d
C Others	Group C1	Group C1a	Group C1b	Group C1c

2.-CHARACTERISTICS		
RESISTANCE TO	CLASS	MEANING
Stains	1	The stain is removed with hot water and a damp cloth.
	2	The stain is removed with a weak cleaning agent.
	3	The stain is removed with mechanical cleaning and a strong cleaning agent.
	4	The stain is removed with stable solvent after immersion for 24 h.
Household chemicals Swimming pool salts	GA/VA	Non visible effect if the hue becomes slightly different, this is definite change in appearance.
	GB/VA	Partial or complete loss of the original surface.
	GC/VA	Partial or complete loss of the original surface.
Acids and alkalis	GLA/VA	Non visible effect if the hue becomes slightly different, this is definite change in appearance.
	GLB/VA	Partial or complete loss of the original surface.
	GLC/VA	Partial or complete loss of the original surface.
	GHA/VA	Non visible effect if the hue becomes slightly different, this is definite change in appearance.
	GBH/VA	Partial or complete loss of the original surface.
	GBV/VA	Partial or complete loss of the original surface.

- GROUP A.** Recommended for moderate or low level transit. Suitable for bedrooms and/or bathrooms in houses (avoid any kind of abrasion).
- GROUP B.** Suitable for light or medium transit, such as rooms inside houses, except for kitchens or areas with direct access from outside.
- GROUP C.** Floorings recommended for medium transit, suitable for houses, all kind of rooms included kitchen or near to entrance area.
- GROUP D.** Floorings suitable for heavy traffic, such as entrances to houses with direct access from the outside, all kind of rooms and professional offices.
- GROUP GRAN TRANSITO.** Floorings suitable and recommended for very heavy traffic.

OBSERVACIONES:

CHARACTERISTICS PORCELAIN (Group B)a				DATE: 07/11/2017
MODEL: WOODSTOCK NATURAL DECO	SERIE: WOODSTOCK	CODE: 20000000000011591		
1.-CLASIFICACION (UNE-EN 14411)				
Dry Pressed Ceramic Tiles with low water absorption - Group Bb, E ≤ 0.5% for internal and external floors and walls.				
2.-SPECIFICACIONES (UNE-EN 14411 - ISO13.006)				
REQUIREMENTS	STANDARD APPLIED	REQUIREMENTS STANDARD	TEST RESULTS	
Dimensions and Surface Quality	ISO 10545-2	—	PASS	
Water Absorption	ISO 10545-3	E ≤ 0.5 %	PASS	
Modulus of Rupture	ISO 10545-4	≥ 35 N/mm ²	PASS	
Slip	EN 101	(*)	PASS	
Cracking Resistance	ISO 10545-11	(*)	PASS	
Resistance to chemicals				
- Household chemicals/ammonium chloride solution 100 g/l		Min B	GA	
- Swimming pool salts/Sodium Hypochlorite solution 20 mg/l		Min B	GA	
- Acids and alkalis:				
- Low concentration/hydrochloric acid solution (3%)	ISO 10545-13	(*)	GLA	
- Citric acid solution 100 g/l		(*)	GLA	
- Potassium hydroxide 30 g/l		(*)	GLA	
- High concentration/hydrochloric acid solution (18%)		(*)	GHA	
- Lactic acid solution (5%)		(*)	GHA	
- Potassium hydroxide 100 g/l		(*)	GHA	
Resistance to staining				
- C203/FE203 + light oil	ISO 10545-14	Min 3	5	
Abrasion Resistance (PEI)	ISO 10545-7	(*)	II	
Frost Resistance	ISO 10545-12	Required	PASS	
Slip resistance	DIN 51130 (R 1)	(*)	RB	
	ANSI 137.1 (DCCOF)	(*)	≥0.42	
	UNE-ENV 12633/Clae	(*)	ZP/1	
3.-APLICACION GROUPS				
According to its characteristics, Hips de F. Gaya Fores, defines this model as group:				
GRUPO B				

(*) in manufacturer catalog

1.-CLASIFICACION				
Water absorption production	Group I	Group IIa	Group IIb	Group III
	E ≤ 3 %	3 % < E ≤ 6 %	6 % < E ≤ 10 %	E > 10 %
A Extruded	Group A1 ISO 13006 Annex A1	Group A2a ISO 13006 Annex A2a	Group A2b ISO 13006 Annex A2b	Group A3 ISO 13006 Annex A3
B Dry pressed	Group B1a E ≤ 0.5 % ISO 13006 Annex B1a	Group B1b ISO 13006 Annex B1b	Group B1c ISO 13006 Annex B1c	Group B1d ISO 13006 Annex B1d
C Others	Group C1	Group C1a	Group C1b	Group C1c

2.-CHARACTERISTICS		
RESISTANCE TO	CLASS	MEANING
Stains	1	The stain is removed with hot water and a damp cloth.
	2	The stain is removed with a weak cleaning agent.
	3	The stain is removed with mechanical cleaning and a strong cleaning agent.
	4	The stain is removed with stable solvent after immersion for 24 h.
Household chemicals Swimming pool salts	GA/VA	Non visible effect if the hue becomes slightly different, this is definite change in appearance.
	GB/VA	Partial or complete loss of the original surface.
	GC/VA	Partial or complete loss of the original surface.
Acids and alkalis	GLA/VA	Non visible effect if the hue becomes slightly different, this is definite change in appearance.
	GLB/VA	Partial or complete loss of the original surface.
	GLC/VA	Partial or complete loss of the original surface.
	GHA/VA	Non visible effect if the hue becomes slightly different, this is definite change in appearance.
	GBH/VA	Partial or complete loss of the original surface.
	GBV/VA	Partial or complete loss of the original surface.

- GROUP A.** Recommended for moderate or low level transit. Suitable for bedrooms and/or bathrooms in houses (avoid any kind of abrasion).
- GROUP B.** Suitable for light or medium transit, such as rooms inside houses, except for kitchens or areas with direct access from outside.
- GROUP C.** Floorings recommended for medium transit, suitable for houses, all kind of rooms included kitchen or near to entrance area.
- GROUP D.** Floorings suitable for heavy traffic, such as entrances to houses with direct access from the outside, all kind of rooms and professional offices.
- GROUP GRAN TRANSITO.** Floorings suitable and recommended for very heavy traffic.

OBSERVACIONES:



ACADIA