

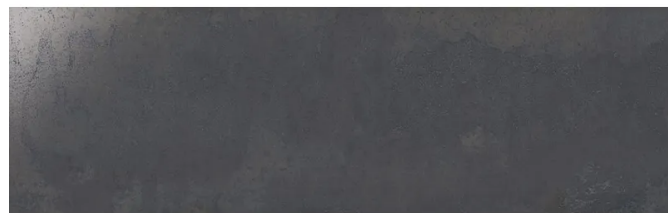
STELLAR STEEL 1248

Code: **STL-STE-1248**

Collection: **Stellar**

Product Details:

| | |
|------------------------|-------------|
| Material | Porcelain |
| Color | Black |
| Surface | Matte |
| Mounting Type: | Loose |
| Priced by: | sf |
| Sold by: | box |
| Sheet Size: | 11.8x47.2" |
| Chip Size (inch) | 11.8x47.2" |
| Chip Size (mm) | - |
| Thickness | 3/8" |
| Sheet Coverage (sq.ft) | 3.868 |
| Variation: | V2 (slight) |
| Porcelain Faces: | 12 |
| Porcelain Edges: | Rectified |



Packaging Info:

| | |
|--------------------------|-----------|
| Packing: | 3 pcs/box |
| Sq. Ft. Per Box: | 11.603 |
| Weight/box: | 59.000 |
| Sheet or Sq. Ft. weight: | 3.868 |



Areas of use

| | |
|------------------------|-----|
| Indoor Walls: | Yes |
| Light traffic floors: | Yes |
| High traffic floors: | Yes |
| Shower Walls: | Yes |
| Shower Floor: | Yes |
| Steam Room: | Yes |
| Swimming Pool: | No |
| Heat areas up to 150F: | Yes |
| Commercial Walls: | Yes |
| Commercial Floors: | Yes |

MIR[®]
Collections

2200 B Zanker Rd,
San Jose, CA 95131
Phone: +1 408 432 1000
Fax: +1 408 228 3924
www.mir-mosaic.com
E-mail: info@mir-mosaic.com

Additional Specs:

| | |
|-------------------|---------|
| Slip resistance: | R9 |
| DCOF: | 0.58 |
| Water absorption: | â‰‰ 0,5 |
| Stain Resistance: | Class 5 |
| MOHS: | 6 |

Maintenance and Installation:

| | |
|---------------------|----------------------------------|
| Recommended Mortar: | Laticrete 254 Platinum |
| Recommended Grout: | Laticrete Permacolor Raven Black |