

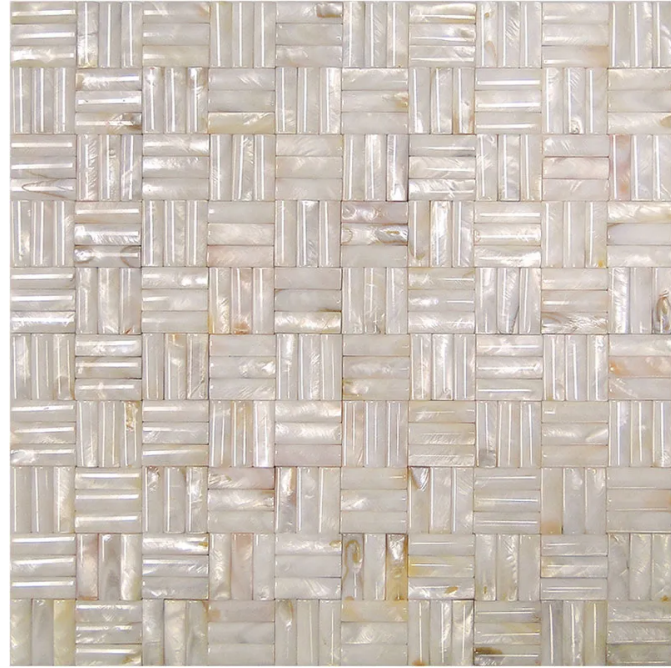
BOCA

Code: **SME-005**

Collection: **Shell**

Product Details:

Material	Shell
Color	Brown
Surface	Polished
Mounting Type:	Mesh Mounted
Priced by:	sheet
Sold by:	sheet
Sheet Size:	11.8x11.8"
Chip Size (inch)	0.4x1.2"
Chip Size (mm)	-
Thickness	5/32"
Sheet Coverage (sq.ft)	0.967
Variation:	-
Porcelain Faces:	-
Porcelain Edges:	-



Packaging Info:

Packing:	20 sht/box
Sq. Ft. Per Box:	19.339
Weight/box:	32.000
Sheet or Sq. Ft. weight:	0.967



Areas of use

Indoor Walls:	Yes
Light traffic floors:	Yes
High traffic floors:	No
Shower Walls:	Yes
Shower Floor:	No
Steam Room:	No
Swimming Pool:	No
Heat areas up to 150F:	Yes
Commercial Walls:	Yes
Commercial Floors:	No

MIR[®]
Collections

2200 B Zanker Rd,
San Jose, CA 95131
Phone: +1 408 432 1000
Fax: +1 408 228 3924
www.mir-mosaic.com
E-mail: info@mir-mosaic.com

Additional Specs:

Maintenance and Installation:

Recommended Mortar:	Laticrete 254 Platinum
Recommended Grout:	Laticrete Permacolor Unsanded