

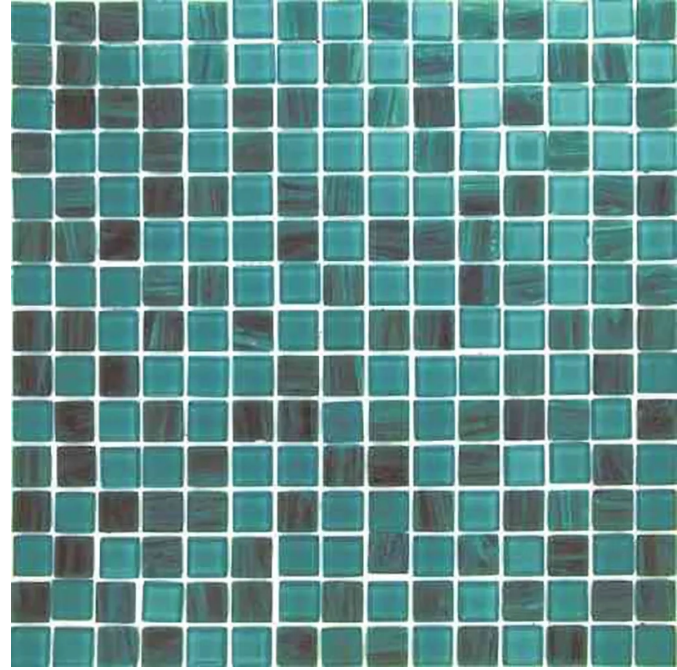
# PALAU

Code: **MIX20-GN453-(PALAU)**

Collection: **MIXES**

## Product Details:

|                        |          |
|------------------------|----------|
| Material               | Glass    |
| Color                  | Green    |
| Surface                | Glossy   |
| Mounting Type:         | Mosaic   |
| Priced by:             | sheet    |
| Sold by:               | sheet    |
| Sheet Size:            | 12x12"   |
| Chip Size (inch)       | 0.8x0.8" |
| Chip Size (mm)         | 20x20    |
| Thickness              | 5/32"    |
| Sheet Coverage (sq.ft) | 1.000    |
| Variation:             | -        |
| Porcelain Faces:       | -        |
| Porcelain Edges:       | -        |



## Packaging Info:

|                          |               |
|--------------------------|---------------|
| Packing:                 | 20 sheets/ctn |
| Sq. Ft. Per Box:         | 20.000        |
| Weight/box:              | 26.000        |
| Sheet or Sq. Ft. weight: | 1.000         |



## Areas of use

|                        |     |
|------------------------|-----|
| Indoor Walls:          | Yes |
| Light traffic floors:  | Yes |
| High traffic floors:   | Yes |
| Shower Walls:          | Yes |
| Shower Floor:          | Yes |
| Steam Room:            | Yes |
| Swimming Pool:         | Yes |
| Heat areas up to 150F: | Yes |
| Commercial Walls:      | Yes |
| Commercial Floors:     | Yes |

**MIR**<sup>®</sup>  
Collections

2200 B Zanker Rd,  
San Jose, CA 95131  
Phone: +1 408 432 1000  
Fax: +1 408 228 3924  
[www.mir-mosaic.com](http://www.mir-mosaic.com)  
E-mail: [info@mir-mosaic.com](mailto:info@mir-mosaic.com)

**Additional Specs:**

Water absorption: < 0.2%  
Stain Resistance: Resistant  
Chemical Resistance: Class A  
Freeze/Thaw Cycling Resis Resistant

**Maintenance and Installation:**

Recommended Mortar: Laticrete Glass Tile Adhesive  
Recommended Grout: Laticrete SPECTRALOCK® PRO Premium Translucent  
Recommended Sealer: N/A